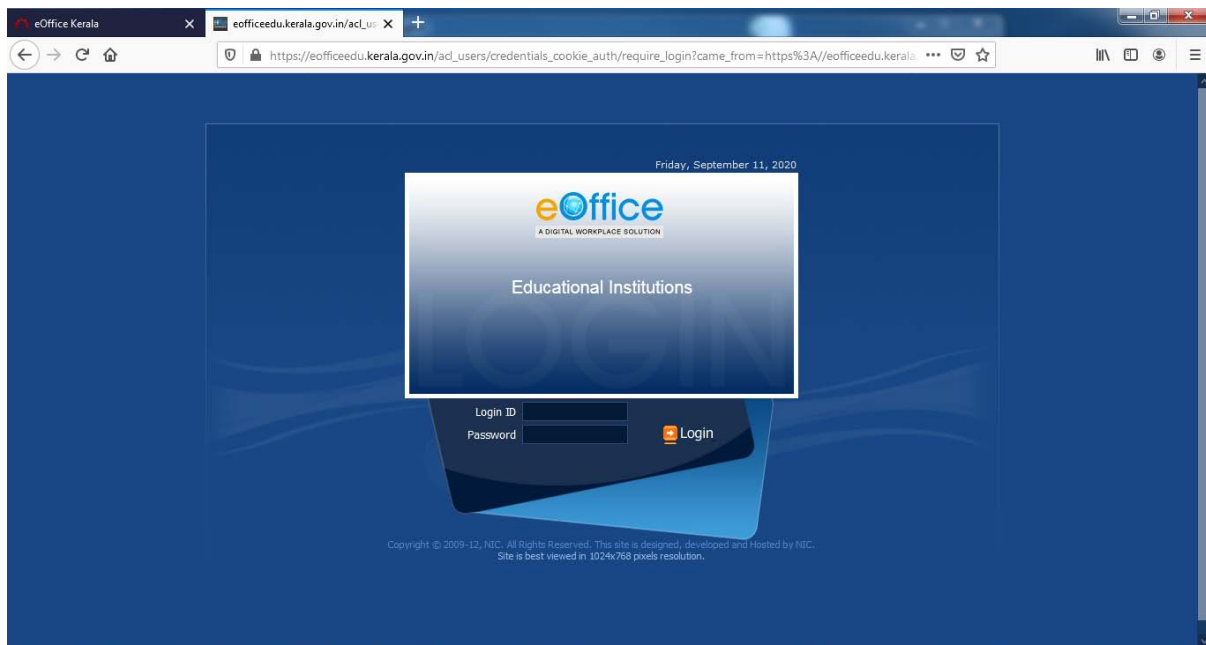
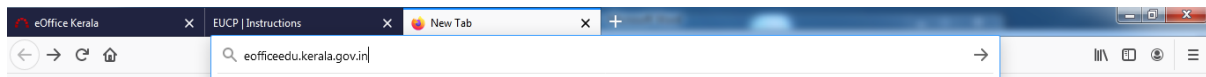


How to Login to eoffice

Use **Mozilla Firefox** browser

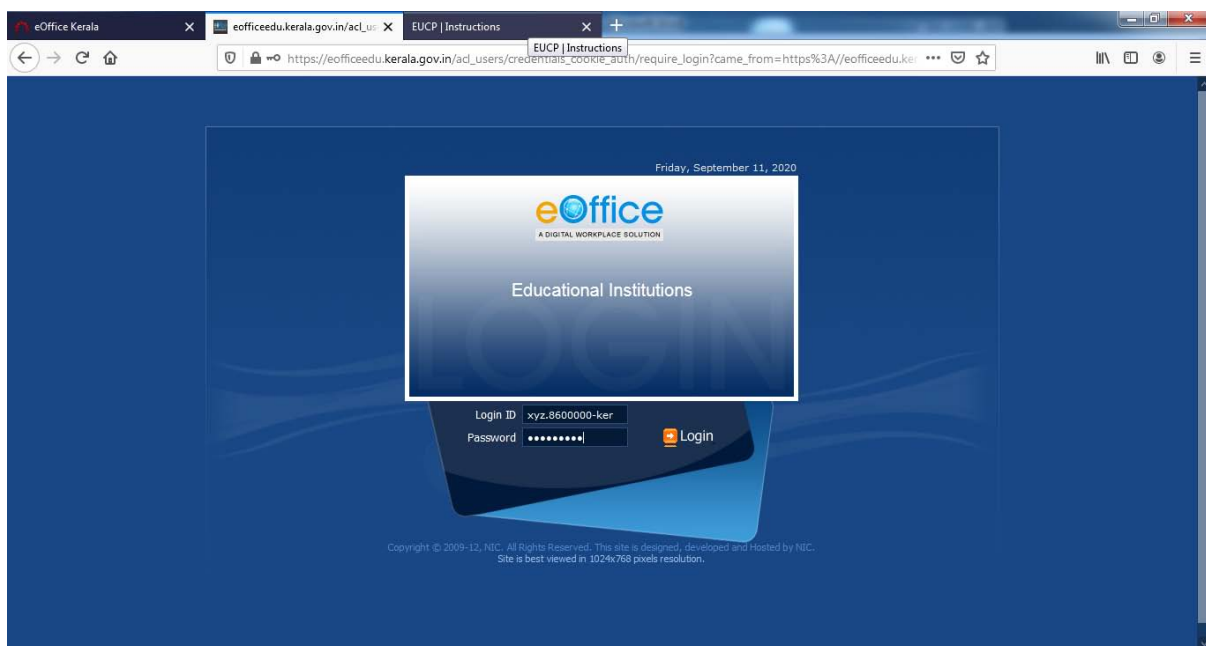
Type **eofficeedu.kerala.gov.in** in the address bar of the browser



Enter the Login ID and Password and click the Login button

Enter the Login ID as xyz.8600000-ker, if your email ID is xyz.8600000@kerala.gov.in

Enter the Password : Same Password of the email ID xyz.8600000@kerala.gov.in



The screenshot displays the eOffice Kerala web portal. At the top, there's a navigation bar with the eOffice logo and a search bar. Below this, a blue header contains links for Directory, Whom to Contact, Employee Services, Division, and Quick Links. The main body is divided into three vertical sections. The left section lists various services under categories like MY SPACE, FILE & DOCUMENT SERVICES, HR SERVICES, and OFFICE SERVICES. The middle section features a Notice Board with a quote of the week and a table of recent events. The right section includes a daily word, helpful links, download forms, and an employee corner with birthday wishes and other announcements. A sidebar on the far right provides quick access to Mail, Calendar, and Gallery.